

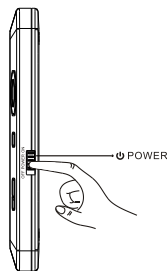
1 Battery charging

Connect your AC adaptor in the DC IN slot and plug it into a standard wall outlet

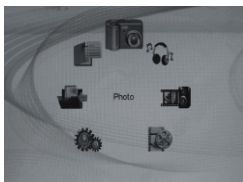


2 Turn on the player

- Slide the POWER button to ON to turn on the player.

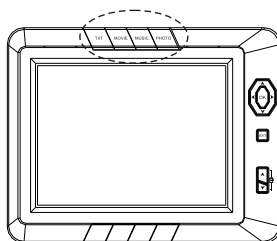


- The player will automatically enter the main menu.



3 Play the content

i. Press the short cut buttons “TXT/MOVIE/MUSIC /PHOTO” to play the content.

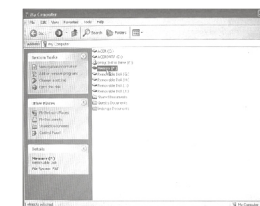


ii. From the main menu, press the RIGHT/LEFT buttons to select the desired item, press OK to play the content.



4 Copy images from PC

- Connect the DPA to PC with the supplied USB cable
- Copy the images from your PC to the internal memory of your DPA



For more detailed instructions and features description, please carefully read the User' s Manual